

Lactation Spaces

1. Buffett Cancer Center - "Fred & Pamela Buffett Cancer Center"

- a. Address: 505 South 45th Omaha, NE 68131
- b. [UNMC Maps](https://info.unmc.edu/unmc101/maps.html) <https://info.unmc.edu/unmc101/maps.html>
- c. **Room 5.12.04.**
- d. The room has a sink, and a trashcan and two stations divided by a curtain. Each station has a Medela Symphony Pump, a chair, a table, and a power source.
- e. Directions: Exit the elevator on the 5th floor and follow signs towards Family Laundry / Shower. The room will be across from Family Laundry / Shower.
- f. Access: **ID card access.** Contact Grace Adler at gadler@unmc.edu to request access to lactation room.



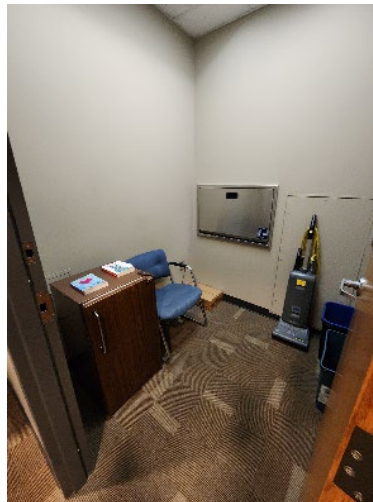
2. Business Services (Building 4230)

- a. Address: 4230 Leavenworth Street Omaha, NE 68105
- b. [UNMC Maps](https://info.unmc.edu/unmc101/maps.html) <https://info.unmc.edu/unmc101/maps.html>
- c. **Room 2049.**
- d. The room has two stations divided by a curtain. Each station has a chair, a table, and a power source.
- e. Access: room is accessible by keycode, 2049#.
- f. Directions: Enter the building and turn right. Room will be in front of you at the end of the hallway.



3. Business Services (Building 4230)

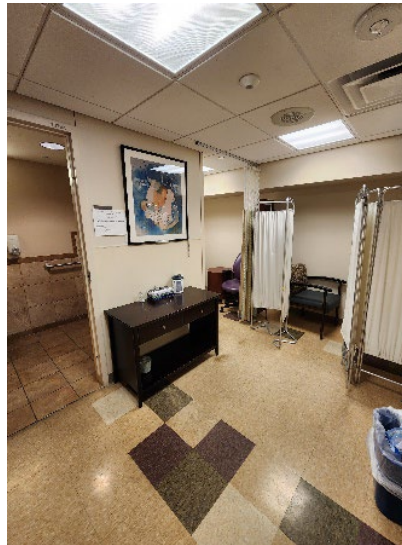
- a. Address: 4230 Leavenworth Street Omaha, NE 68105
- b. [UNMC Maps](https://info.unmc.edu/unmc101/maps.html) <https://info.unmc.edu/unmc101/maps.html>
- c. **Room 2057 - Lactation Room.**
- d. The room has a chair, refrigerator, a power source, a changing table, and locks from the inside. A bathroom is located next door.
- e. Access: anyone with access to the IT division of Building 4230.
- f. Contact: Info Desk # 402.559.7253.
- g. Directions: Enter the IT Division and turn right. Take the next right and the room will be between the bathrooms.



4. Clarkson Tower

- a. Address: 4350 Dewey Ave Omaha, NE 68105
- b. [UNMC Maps](https://info.unmc.edu/unmc101/maps.html) <https://info.unmc.edu/unmc101/maps.html>
- c. **Room 4879.**

- d. The room has two stations divided by a curtain. Each station has a Medela Symphony pump, a table, and a power source. The room has a bathroom with a sink, a mirror, and trashcan.
- e. Access: via a code obtained from Labor and Delivery, 402.559.6363.
- f. Contact: Stacia Kennedy at skennedy@nebraskamed.com or at 402.552.3487.
- g. Directions: From the Service Elevators, follow signs towards Emergency Room Holding Area Room 4881 A-G. The room will be in the hallway past the holding area.



5. Clarkson Tower

- a. Address: 4350 Dewey Ave Omaha, NE 68105
- b. [UNMC Maps](https://info.unmc.edu/unmc101/maps.html) <https://info.unmc.edu/unmc101/maps.html>
- c. **Room 08174.**
- d. The room has two stations divided by a curtain. Each station has a Medela Symphony pump, a table, and a power source. The room has a bathroom with a sink, a mirror, a shower, and a trashcan.
- e. Access: with a code obtained from Labor and Delivery, 402.559.6363.
- f. Contact: Labor and Delivery, 402.559.6363.
- g. Directions: From Elevator E, exit on the Ground floor, and turn left. Take your next left down the hallway, turn left at the hallway across from the Pulmonary Lab, and then turn left again at the following hallway. The room will be on your left-hand side.



6. College of Dentistry - (Lincoln)

- a. Address: Located on the campus of the University of Nebraska at Lincoln (UNL) [4000 East Campus Loop South, Lincoln, NE 68583-0740](#)
- b. **Room 1226** (Note: 2 additional rooms will be available in 2024).
- c. The room is in a wing of the College of Dentistry building. It has four stations divided by curtains. Each station has a chair, a side table, and a power outlet. Outside of the curtained areas there are two smaller refrigerators, Clorox wipes, hand sanitizer, a trashcan, and a fire extinguisher.
- d. Access: open-access and locks from the inside. It is setup to be a multi-person room with individual curtained partitions.
- e. Contact: Jodi Isom at jisom@unmc.edu or at 402.472.2348.
- f. Directions: The room is located on the lower level in the south wing, last door on the left.



7. College of Medicine - "Michael F. Sorrell Center for Health Science Education"

- a. Address: 619 South 42nd Street Omaha, NE 68105
- b. [UNMC Maps](https://info.unmc.edu/unmc101/maps.html) <https://info.unmc.edu/unmc101/maps.html>
- c. **Room 3013.**
- d. The room has two couches, a table, power sources, a sink, a trashcan, and a mirror.
- e. Access: **ID card access.** Contact Grace Adler at gadler@unmc.edu to request access to lactation room.

- f. Directions: Exit the elevator on the 3rd floor to the right, turn right again and the room will be on your left-hand side past the wheelchair accessible bathroom.



8. College of Nursing - Kearney Division & College of Allied Health Professions (Kearney)

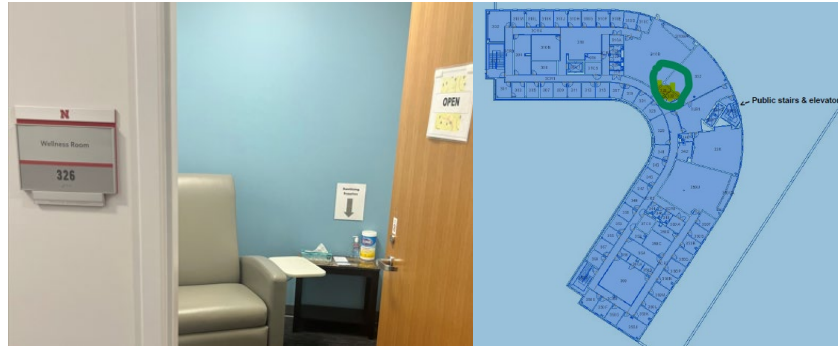
- a. Address: Located on the campus of the University of Nebraska at Kearney (UNK), 2402 University Drive, Kearney, NE 68849-4510
- b. **Second Floor: Room has a “Lactation” sign.**
- c. The room has a chair, a table, power source, a trashcan, a sink, a refrigerator, and cleaning supplies.
- d. Access: room has open-access and locks from the inside.
- e. Contact: Sarah J. Jones at sjones1@unmc.edu or at 308.865.8322.



9. College of Nursing - Lincoln Division (Lincoln)

- a. Address: UNMC College of Nursing is in a facility that is shared with the University Health Center of the University of Nebraska-Lincoln, 550 North 19th Street, Lincoln, NE 68588-0620
- b. **Room HCCN 326 - Wellness Room.**
- c. The room has a chair, a table, a power source, tissues/paper towels, and a trashcan. Down the hall, the third (3rd) Floor Breakroom, has a sink and refrigerators.
- d. Access: open-access and locks from the inside. N-Card access to the 3rd floor hallway needed. For card access contact Kendra L. Knox at kknox@unmc.edu or at 402.472.3656
- e. Contact: Ann L Callies, Academic Success Coordinator, at ann.callies@unmc.edu or at 402.472.4712.

- f. Directions: Room is located on the 3rd floor hallway of the College of Nursing- Lincoln. Stairs and elevators provide access to 3rd floor.



10. College of Nursing - Lincoln Division (Lincoln)

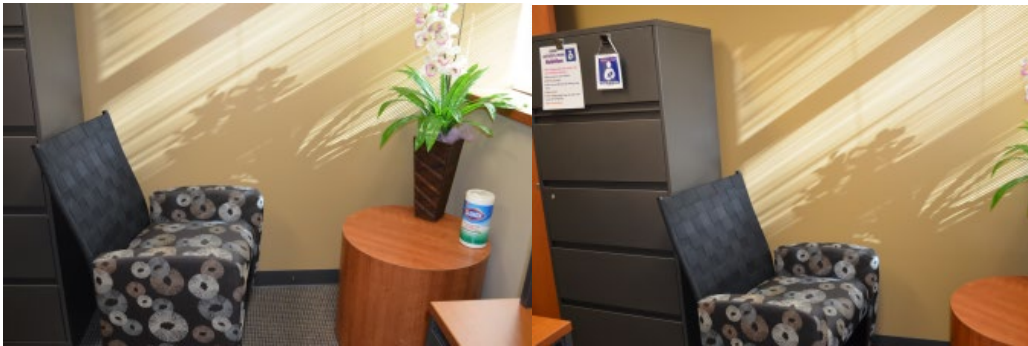
- a. Address: UNMC College of Nursing is in a facility that is shared with the University Health Center of the University of Nebraska-Lincoln, 550 North 19th Street, Lincoln, NE 68588-0620.
- b. **Room HCCN 328 - Wellness Rooms.**
- c. Room has a chair, a table, a power source, tissues/paper towels, and a trashcan. Down the hall, the third (3rd) Floor Breakroom, has a sink and refrigerators.
- g. Access: rooms have open-access and locks from the inside. N-Card access to the 3rd floor hallway needed. For card access contact Kendra L. Knox at kknox@unmc.edu or at 402.472.3656
- h. Contact: Ann L Callies, Academic Success Coordinator, at ann.callies@unmc.edu or at 402.472.4712.
- i. Directions: Both rooms are located on the 3rd floor hallway of the College of Nursing-Lincoln. Stairs and elevators provide access to 3rd floor.



11. College of Nursing - Northern Division (Norfolk) - "J. Paul and Eleanor McIntosh College of Nursing."

- a. Address: The Northern Division is in a beautiful state-of-the-art facility which on the campus of Northeast Community College, 801 East Benjamin Avenue Norfolk, NE 68701.
- b. [Campus map](#)

- c. **Room 181.**
- a. The room has a chair, table, power source and a trashcan. The window has a curtain for privacy purposes.
- b. Access: card access. For card access, please contact Gwen Porter at gporter@unmc.edu or at 402.844.7894.
- c. Contact: Diane Rizzo at diana.rizzo@unmc.edu or at 402.844.7890.
- d. Directions: The room is located on the first floor of our building, down the east hallway.



12. College of Nursing - Omaha Division (Omaha)

- a. Address: 4111 Dewey Ave, Omaha, NE 68105
- b. [UNMC Maps](https://info.unmc.edu/unmc101/maps.html) <https://info.unmc.edu/unmc101/maps.html>
- c. **Room 4064.**
- d. The room has one couch, chairs, ta able, power source, reading materials, a refrigerator, a trashcan, and a Medela Pump in Style Advanced Pump.
- e. Access: room has open-access and locks from the inside.
- f. Contact: CON Dean's Office, 402.559.5414.
- g. Directions: Exit the elevators on the 4th floor, turn right, then turn right again. Walk to the end of the hall and the room will be on your left-hand side before you hit the skywalk to CNS.



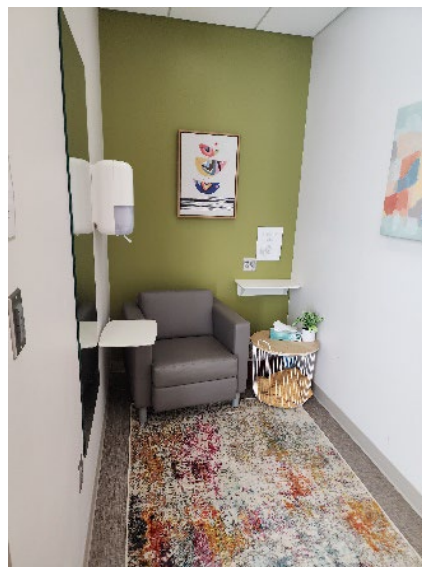
13. College of Nursing - West Nebraska Division (Scottsbluff)

- a. Address: Located in the Western Nebraska Community College, Scottsbluff Campus (WNCC) campus – 2620 College Park, Scottsbluff, NE 69361
- b. Room: TBD



14. College of Pharmacy - “UNMC Center for Drug Discovery and Lozier Center for Pharmacy Sciences and Education”

- a. [UNMC Maps](https://info.unmc.edu/unmc101/maps.html) <https://info.unmc.edu/unmc101/maps.html>
- b. Room 1039A.
- c. The room has a chair, a table, a power source, a mirror, a trashcan, Clorox wipes, and paper towels.
- d. Access: open-access and the door locks from the inside.
- e. Contact: COP Dean’s Office, 402.559.4838.
- f. Directions: The room is in the east end of the 1st floor, near the stairwell and compounding laboratory.



15. College of Public Health - “Harold M. and Beverly Maurer Center for Public Health”

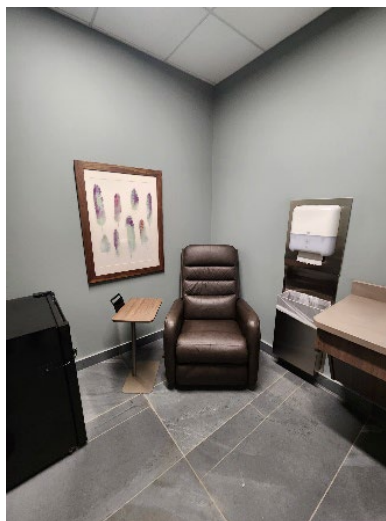
- a. Address: 519 South 40th Street Omaha, NE 68105
- b. [UNMC Maps](https://info.unmc.edu/unmc101/maps.html) <https://info.unmc.edu/unmc101/maps.html>
- c. Room 2059.

- d. The room has a chair, table, a refrigerator, a sink, a trashcan, a mirror, a power source, and a Medela Symphony pump. Additional pump supplies are also available on a donation basis.
- e. Access: open-access and locks on the inside.
- f. Directions: Enter from the North end of the building. The room will be on your right-hand side near the wheelchair accessible bathroom.



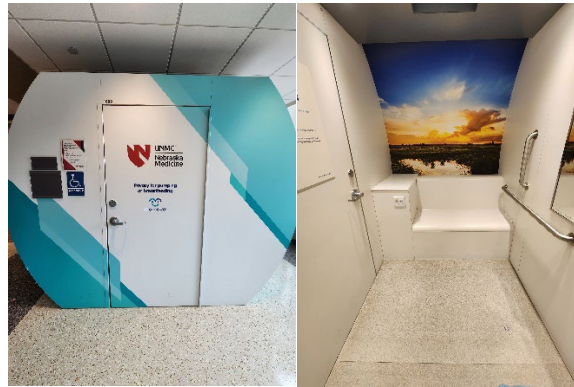
16. Dr. Edwin G. & Dorothy Balbach Davis Global Center

- a. Address: 4111 Emile St, Omaha, NE 68105
- b. [UNMC Maps](https://info.unmc.edu/unmc101/maps.html) <https://info.unmc.edu/unmc101/maps.html>
- c. **Room 1007 - Wellness Room.**
- d. The room has a chair, a table, a power source, a sink, a mirror, a trashcan, and a locking refrigerator (request key from the information desk).
- e. Access: open-access and the door locks from the inside.
- f. Contact: Global Center Information Desk, 402.559.3239.
- g. Directions: When facing the Information desk, take the hallway to the right and the room is in the hallway behind the elevators.



17. Durham Outpatient Center

- a. Address: 4400 Emile Street Omaha, NE 68105
- b. [UNMC Maps](https://info.unmc.edu/unmc101/maps.html) <https://info.unmc.edu/unmc101/maps.html>
- c. **Lobby - Mamava Lactation Pod.**
- d. The room has power sources, a bench, a shelf, mirror, and a hand sanitizer.
- e. Access: via obtaining a key through the Information Desk or Security.
- f. Contact: Info Desk / Security 402.559.5111
- g. Directions: Enter the main lobby and the pod is to your right behind the escalators.



18. Durham Outpatient Center

- a. Address: 4400 Emile Street Omaha, NE 68105
- b. [UNMC Maps](https://info.unmc.edu/unmc101/maps.html) <https://info.unmc.edu/unmc101/maps.html>
- c. **Room 4654.**
- d. The room has a chair, a shelf, a sink, a trashcan, a power source, and a Medela Symphony pump. The door locks from the inside.
- e. Access: granted by the Women's Health Resource Center. Reservation for time slots strongly recommended. If open, room is available for drop in use.
- f. Contact: Women's Health Resource Center, 402.559.6345.
- g. Directions: Exit the elevators on the fourth floor to the left and the Resource Center will be in front of you.



19. Durham Research Center I

- a. Address: Durham Research Center 1 - S 45th St, Omaha, NE 68131
- b. [UNMC Maps](https://info.unmc.edu/unmc101/maps.html) <https://info.unmc.edu/unmc101/maps.html>
- c. **Room 1007C.**
- d. The room has two stations divided by a curtain. It has two couches with tables, power sources, a sink, a mirror, a trashcan, and a white board.
- e. Access: ID card access. Contact Grace Adler at gadler@unmc.edu to request access to lactation room.
- f. Directions: From the DRC1 lobby, enter the hallway to the left of the elevators and go through doorway 1099G between classrooms 1005 and 1006. The room will be past the break area on the right-hand side.



20. Durham Research Center II

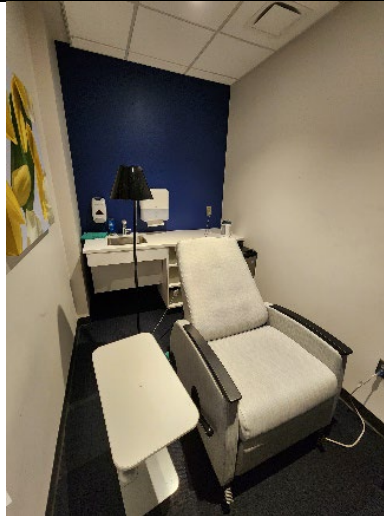
- a. Address: Durham Research Center 2 - S 45th St, Omaha, NE 68106

- b. [UNMC Maps](https://info.unmc.edu/unmc101/maps.html) <https://info.unmc.edu/unmc101/maps.html>
- c. **Lobby – Mamava Lactation Pod.**
- d. The room has two benches, shelves, power sources, a mirror, a trashcan, and cleaning supplies.
- e. Access: via the Mamava App and can be deadbolted from the inside.
- f. Contact: Dorene and Julie, 402.559.3231 or 402.677.7342
- g. Directions: Enter the lobby of DRC2 and the pod will be on your right-hand side.



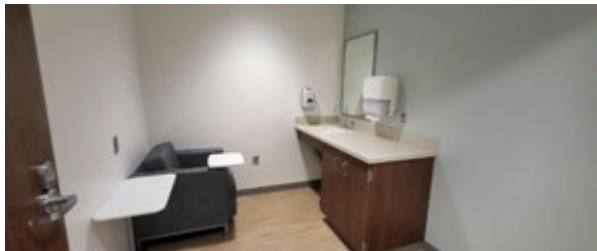
21. Medical Science Building

- a. Address: 4350 Dewey Ave, Omaha, NE 68105
- b. [UNMC Maps](https://info.unmc.edu/unmc101/maps.html) <https://info.unmc.edu/unmc101/maps.html>
- c. **Room 2520 D.**
- d. The room has a reclining chair, a table, a lamp, a sink, a refrigerator, a power source, and a trashcan. The room is located within the House Officer Wellness Lounge (HOWL). The room locks from the inside.
- e. Access: Only for individuals with access to this area.
- f. Directions: Exit the elevator from University Tower on the 2nd floor and follow signs for “Surgery Patients and Family Only” into Hixon-Lied. Turn left down the hallway towards Buffett Cancer Center and the Wellness Lounge, Room 2520, will be on your right-hand side before you reach the elevators. Room 2520D is within the lounge, the last room down the hallway.



22. Munroe-Meyer Institute (MMI)

- a. 6902 Pine St. Omaha, Nebraska 68106
- b. [Map](#)
- c. **Room 10033.**
- d. The room has a chair, a side table, a power source, a mirror, a trashcan, a sink, hand soap, paper towels and an Ameda Finesse Pump.
- e. Access: open-access and locks on the inside. Accessible to MMI staff, faculty, and guests.
- f. Contact: MMI, Clinic Nurse Manager: 402.559.2297
- g. Directions: **10033**; From the east entrance, the room is straight forward and just to the right in the main hallway. The front desk receptionist can help with directions if needed.



10033

23. Munroe-Meyer Institute (MMI)

- a. 6902 Pine St. Omaha, Nebraska 68106
- b. [Map](#)
- c. **Room 20035.**
- d. The room has a chair, a side table, a power source, a mirror, a trashcan, a sink, hand soap, paper towels and an Ameda Finesse Pump.
- e. Access: open-access and locks on the inside. Accessible to MMI staff, faculty, and guests.
- f. Contact: MMI, Clinic Nurse Manager: 402.559.2297
- g. Directions: **20035**; From the east entrance take the main elevators to the second floor. The room is straight ahead just past the waiting area on the left side wall.



20035

24. Munroe-Meyer Institute (MMI)

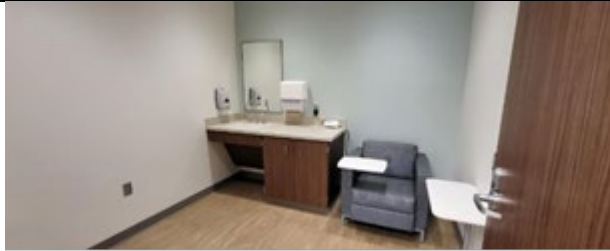
- a. 6902 Pine St. Omaha, Nebraska 68106
- b. [Map](#)
- c. **Room 30041**
- d. The room has a chair, a side table, a power source, a mirror, a trashcan, a sink, hand soap, paper towels and an Ameda Finesse Pump.
- e. Access: open-access and locks on the inside. Accessible to MMI staff, faculty, and guests.
- f. Contact: MMI, Clinic Nurse Manager: 402.559.2297
- g. Directions: **30041**; From the east entrance take the main elevators to the third floor. The room is to the right past the check-in desk.



30041

25. Munroe-Meyer Institute (MMI)

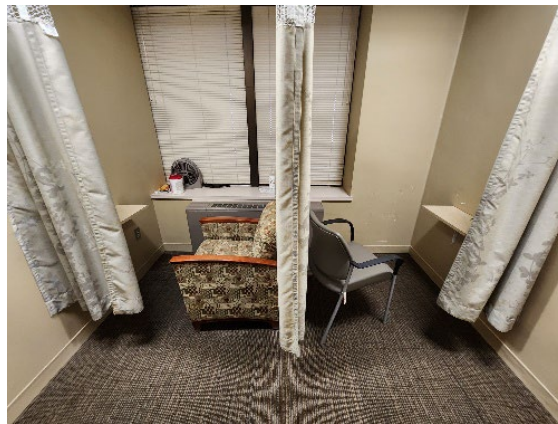
- a. 6902 Pine St. Omaha, Nebraska 68106
- b. [Map](#)
- c. **Room 40006.**
- d. The room has a chair, a side table, a power source, a mirror, a trashcan, a sink, hand soap, paper towels and an Ameda Finesse Pump.
- e. Access: open-access and locks on the inside. Accessible to MMI staff, faculty, and guests.
- f. Contact: MMI, Clinic Nurse Manager: 402.559.2297
- g. Directions: **40006**; From the east entrance take the main elevators to the fourth floor. Go right out of the elevators and past the administration suite. The room is at the end of the hall.



40006

26. University Tower

- a. Address: 4400 Emile Street Omaha, NE 68105
- b. [UNMC Maps](https://info.unmc.edu/unmc101/maps.html) <https://info.unmc.edu/unmc101/maps.html>
- c. **Room 4207.**
- d. The room has two stations divided by curtains. Each station has a chair, a shelf, a power source, and a trashcan.
- e. Access: by a code requested from Labor and Delivery, 402.559. 6363.
- f. Contact: Labor and Delivery, 402.559.6363.
- g. Directions: From C Store, take stairwell 3298A to the 4th floor and exit to the left. The room will be before the double doors on your right-hand side.



27. University Tower

- a. Address: 4400 Emile Street Omaha, NE 68105
- b. [UNMC Maps](https://info.unmc.edu/unmc101/maps.html) <https://info.unmc.edu/unmc101/maps.html>
- c. Room 4211
- d. This room has four stations divided by curtains. Each station has a chair, a shelf, a power source, and a trashcan. The room has one Medela Symphony pump and a sink.
- e. Access: by a code requested from Labor and Delivery, 402.559.6363.
- f. Contact: Labor and Delivery, 402.559.6363.
- g. Directions: From C Store, take stairwell 3298A to the 4th floor and exit to the left. The room will be before the double doors on your left-hand side across from the lockers.



28. Wittson Hall

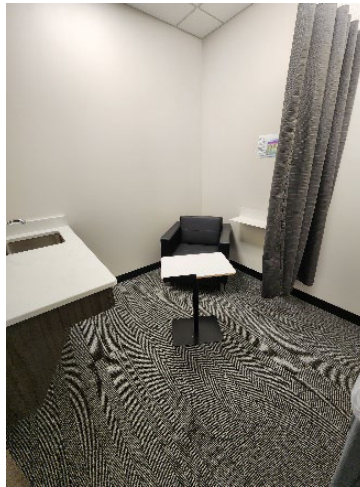
- a. Address: 528 S 42nd Street, Omaha, NE 68198
- b. [UNMC Maps](https://info.unmc.edu/unmc101/maps.html) <https://info.unmc.edu/unmc101/maps.html>
- c. **Room 3051A**
- d. The room has two stations divided by a curtain. Each station has a chair, a shelf, and a power source. The room has a trashcan and one Medela Symphony pump.
- e. Access: open-access and locks on the inside.
- f. Directions: The room is located within the Women's restroom. From the main entrance, walk past the stairwell and enter doors on the left. The restroom will be on the left-hand side after going through the doorway. Inside the restroom there is a door going into the Lactation room.



29. Wittson Hall / Leon S. McGoogan Health Sciences Library

- a. Address: 528 S 42nd Street, Omaha, NE 68198
- b. [UNMC Maps](https://info.unmc.edu/unmc101/maps.html) <https://info.unmc.edu/unmc101/maps.html>

- c. **Room 6007 (McGoogan Library).**
- d. The room has a chair, a table, a shelf, a curtain, a power source, a sink, and a trashcan.
- e. Access: only for employees/students with access to the McGoogan Library. The room is open and locks on the inside.
- f. Directions: Exit the elevator to the right and follow the hallway in front of the Maker Studio (ignore sign saying to turn right). Turn right at the next hallway and the room will be on your immediate right.



30. Wittson Hall / Leon S. McGoogan Health Sciences Library

- Address: 528 S 42nd Street, Omaha, NE 68198
- a. [UNMC Maps](https://info.unmc.edu/unmc101/maps.html) <https://info.unmc.edu/unmc101/maps.html>
- b. **Room 7042 (McGoogan Library).**
- c. The room has a chair, a table, a shelf, a curtain, a power source, a sink, and a trashcan.
- d. Access: only for employees/students with access to the McGoogan Library. The room is open and locks on the inside.
- e. Directions: Take the elevator to the sixth floor, then take the far-right elevator to the 7th floor. Exit the elevator to the right and follow signs to the second hallway on your right-hand side. Turn right and the room will be on the left-hand side across from the elevator.



31. **Wittson Hall / Leon S. McGoogan Health Sciences Library**

- a. Address: 528 S 42nd Street, Omaha, NE 68198
- b. [UNMC Maps](https://info.unmc.edu/unmc101/maps.html) <https://info.unmc.edu/unmc101/maps.html>
- c. **Room 8004 (McGoogan Library).**
- d. The room has a chair, a shelf, a curtain, a power source, a sink, a mirror, and a trashcan.
- e. Access: only for employees/students with access to the McGoogan Library. The room is open and locks on the inside.
- f. Directions: Take the elevator to the 6th floor, then take the far-right elevator to the 8th floor. Exit the elevator to the right, and the room will be on your right-hand side after passing through first doorway.



[UNMC Maps](https://info.unmc.edu/unmc101/maps.html) <https://info.unmc.edu/unmc101/maps.html>

[UNMC Title IX](#) webpage

[UNMC](#) webpage