

# REGISTRATION BROCHURE



University of Nebraska  
Medical Center  
Nebraska Medicine

## CONFERENCE DIRECTORS

James O. Armitage, MD

Matthew A. Lunning, DO, FACP

Julie M. Vose, MD, MBA

# 2024 PAN PACIFIC LYMPHOMA CONFERENCE

July 15-19 • Hyatt Regency Maui

ALSO AVAILABLE VIA LIVE STREAM

**CALL FOR ABSTRACTS** — Deadline: March 29, 2024

[www.unmc.edu/panpacificlymphoma](http://www.unmc.edu/panpacificlymphoma)

# 30 Years of Educational Excellence

The Pan Pacific Lymphoma Conference is one of the largest gatherings of clinicians and researchers specializing in the areas of lymphoma and transplantation. The 2024 conference is your chance to explore vital information on clinical updates and research, meet key thought leaders, and exchange ideas with more than 600 members of the multidisciplinary lymphoma clinical team.

This conference is intended for **oncologists, hematologists, pathologists, clinical scientists, advanced practice providers, nurses, and pharmacists.**

## On-site Conference Venue



### Hyatt Regency Maui Resort and Spa

200 Nohea Kai Dr, Lahaina, HI 96761

### UNABLE TO TRAVEL TO HAWAII? NO WORRIES!

Join the conference live stream and receive continuing education credits. The live stream enables you to participate in this conference from anywhere in the world as long as you have an internet connection.

## Questions?

Contact **Brenda Ram, CMP, CHCP**, Director of Educational Programs, Center for Continuing Education, University of Nebraska Medical Center. Email [bram@unmc.edu](mailto:bram@unmc.edu). Telephone 402-559-9250.

## Conference Objectives

At the conclusion of the conference, the participant should be better able to:

1. Provide an update on biosimilar and generic medications utilized in the management of lymphoma.
2. Discuss the recognition of adverse events in new and emerging therapies in lymphoma that may result in dose reductions or dose holds in the management of lymphoma.
3. Identify the best utilization of rehabilitation facilities in the care of patients with lymphoma.
4. Discuss the optimal makeup and strategies for optimal clinic efficiency in a lymphoma-specific clinic.
5. Discuss how to optimally conduct and operationalize clinical trials for all potential subjects.
6. Identify factors related to anxiety, depression, and substance abuse amongst providers and the impact on their well-being.
7. Describe the key alterations that lead to lymphoma, how artificial intelligence may impact the pathological pathway to diagnosis of lymphoma, and how liquid tumor biopsy may supplement the response to therapy analysis.
8. Discuss how the evolving imaging technologies may be integrated into response assessment in the management of lymphoma.
9. Assess the impact of past and future therapies for the initial treatment of classical Hodgkin lymphoma (cHL), large B-cell lymphoma (LBCL), and mantle cell lymphoma (MCL).
10. Evaluate the diverse landscape of monoclonal gammopathies of unknown significance, treatment for lymphoplasmacytic lymphoma (LPL), and novel treatment for plasma cell dyscrasias (PCD).
11. Analyze clinical trial results impacting the management of relapsed and/or refractory follicular lymphoma (FL), peripheral T-cell lymphoma (PTCL), LBCL, MCL, and primary central nervous system lymphoma (PCNSL).
12. Differentiate the treatment options for CD30+ PTCL.
13. Discuss the changing role of consolidative autologous transplantation in MCL.
14. Discuss the optimal initial and relapsed/refractory sequencing for chronic lymphocytic leukemia (CLL)/small lymphocytic lymphoma (SLL).
15. Discuss optimal treatment and management of marginal zone lymphoma (MZL), CLL/SLL, PTCL, and MCL complications.
16. Explain the roles of the interprofessional health care team in the diagnosis, treatment, management, and support of lymphoma and hematologic malignancies.



## Participant Registration Fee

### IN-PERSON REGISTRATION

	By Apr 19	After Apr 19
Physicians	\$500	\$600
All Other Health Care Providers	\$350	\$450
Pharmaceutical and Other Health Care Industry Attendees	\$850	\$1000

The in-person participant registration fee includes all scientific sessions, breakfasts, welcome reception on Tuesday, conference dinner on Thursday, symposiums, and continuing education credit.

#### Registration Deadline: June 14, 2024

Once online registration is closed, you will only be able to register on-site for the following walk-in fee:

- Physicians – \$750
- Other Health Care Providers – \$600
- Pharmaceutical and Other Health Care Industry Attendees – \$1150

Walk-in registrations will only be accepted if space is available.

### Onsite Accompanying Guest Fee

The fee for each accompanying guest over the age of 12 is \$250. There is no charge for children under the age of 12. Accompanying guests may join conference registrants for the following food functions:

- Welcome reception on Tuesday evening
- Conference dinner on Thursday evening
- Continental breakfasts and breaks as part of the main conference from Monday through Friday

Name tags will be issued and required for all at these conference food functions.

## Call for Abstracts

The Conference Directors welcome the submission of abstracts for the 2024 Pan Pacific Lymphoma Conference.

All accepted abstracts will be presented as e-posters (accompanied by audio file) and made available to conference attendees via the conference app's ePoster Gallery. The presenting author is required to register for the conference either as an in-person or live stream attendee. To learn more about the abstract submission guidelines and requirements, go to [www.unmc.edu/PanPacificLymphoma](http://www.unmc.edu/PanPacificLymphoma).

The deadline for abstract submission is **March 29, 2024**.

### LIVE STREAM REGISTRATION

	By Apr 19	After Apr 19
Physicians	\$350	\$450
All Other Health Care Providers	\$300	\$400
Pharmaceutical and Other Health Care Industry Attendees	\$700	\$900

The live stream participant registration fee includes one username and password for access to all scientific sessions, symposiums, and continuing education credit. Information on how to access the live stream will be sent via email to registered participants a few days prior to the start of the conference. Only one participant (per username and password) may view or access the live stream. It is not permissible to share this username and password.

#### Registration Deadline: July 1, 2024

### Cancellation/Refund Policy

If you are no longer able to attend the conference, you may submit the name of a colleague that will be attending in your place until **June 14, 2024**. After this date, no further replacements will be accepted.

There is a \$250 processing fee for cancellations made by **June 14, 2024**. Cancellations made after this date and registrants who fail to attend are responsible for the full conference registration fee. If you need to cancel your conference registration, please email [conted@unmc.edu](mailto:conted@unmc.edu).

**Full payment must accompany each conference registration.**

**To register**, go to [www.unmc.edu/PanPacificLymphoma](http://www.unmc.edu/PanPacificLymphoma) or call 402-559-5929.

### Travel Stipend

The Pan Pacific Lymphoma Conference will provide a limited number of stipends (\$1000 value) to fellows-in-training, junior faculty\* members, or nurses whose abstract has been accepted and who would like to attend the conference in person.

To be considered for a travel stipend, please submit, along with your abstract, a letter from your department chair, chief of staff, or director, verifying your status.

The stipends will be awarded in the following manner:

- the conference registration fee will be waived; and
- two (2) nights' lodging plus tax at the Hyatt Regency Maui will be paid directly by the Pan Pacific Lymphoma Conference

Stipend recipients must stay at the Hyatt Regency Maui in order to accept this stipend. No direct funds will be disbursed.

\*Junior faculty is defined as a faculty member of three years or less.

# Conference Agenda

## Monday, July 15

### INTERPROFESSIONAL EDUCATION DAY

**7:00 a.m.** Conference Registration / Continental Breakfast

**7:50 a.m.** Aloha / Conch Ceremony  
Matthew A. Lunning, DO, FACP

#### The Day-to-Day Treating of Lymphoma Patients

MODERATOR: Ashley L. Schmitt, PA-C

**8:00 a.m.** Updates on Utilization of Biosimilars and Generics in Lymphomas  
Jared E. Matya, PharmD, BCOP

**8:20 a.m.** Adjudicating Adverse Events in Lymphoma Patients  
Ashley L. Schmitt, PA-C

**8:40 a.m.** What the Social Worker Wished You Knew  
Angela Mortensen, LICSW

**9:00 a.m.** Optimal Team Utilization Round Table  
Christine Cox, RN  
Ann S. LaCasce, MD, MMSc  
Matthew A. Lunning, DO, FACP  
Caitlin A. Murphy, DNP, APRN, FNP-BC, AOCNP  
Ashley L. Schmitt, PA-C

**9:30 a.m.** Refreshment Break

#### How to Increase Your PI'ness

MODERATOR: Katie Penas, MHA, CNMT, RT(N)

**9:40 a.m.** How to Increase Your Odds in Obtaining an Investigator-Initiated Trial  
John P. Leonard, MD

**10:00 a.m.** How to Work with the Food and Drug Administration in Clinical Trials  
Grzegorz S. Nowakowski, MD

**10:20 a.m.** How to Recognize Clinical Trial Red Flags  
Katie Penas, MHA, CNMT, RT(N)

**10:40 a.m.** How to Increase Diversity in Clinical Trials  
Ruemu E. Birhiray, MD

#### Practitioner Wellness

MODERATOR: Tara M. Graff, DO, MS

**11:00 a.m.** Taboo Topics in Healthcare  
David S. Kroll, MD

**11:20 a.m.** Achieving Career Balance: XX Perspective  
Loretta J. Nastoupil, MD

**11:40 a.m.** Achieving Career Balance: XY Perspective  
Craig H. Moskowitz, MD

**12:00 p.m.** Adjourn

## Tuesday, July 16

**7:00 a.m.** Conference Registration / Continental Breakfast

**7:30 a.m.** Welcome  
James O. Armitage, MD and Julie M. Vose, MD, MBA

#### Future Assessment of Lymphoma

MODERATOR: Kyle Skiermont, PharmD

**7:40 a.m.** What is the Governor in Lymphomagenesis  
Michael R. Green, PhD

**8:00 a.m.** Artificial Intelligence in Assessing Lymphoma  
Swaminathan P. Iyer, MD

**8:20 a.m.** Future of Liquid Biopsies in Lymphoma  
Davide Rossi, MD, PhD

**8:40 a.m.** Impact of World Health Organization or International Consensus Classification System in Lymphoma  
Elaine S. Jaffe, MD

**9:00 a.m.** Working Together to Improve Imaging Assessment for Response in Lymphoma  
Sally F. Barrington, MBBS, MSc, FRCP, FRCR, MD  
Judith Trotman, MBChB, FRACP, FRCPA

**9:30 a.m.** Incorporating Liquid Biopsies into Clinical Practice in Aggressive Lymphomas  
Andrew D. Zelenetz, MD, PhD

**9:50 a.m.** Break

## Rock the Vote: Choosing Initial Therapy Wisely

MODERATORS: Bruce D. Cheson, MD, FACP, FAAAS, FASCO and Matthew A. Lunning DO, FACP

- 10:05 a.m.** Advanced Stage Classical Hodgkin Lymphoma
- ABVD-Based – Stephen M. Ansell, MD, PhD
  - BV-Based – Ranjana H. Advani, MD
  - Checkpoint Inhibitors Based – Alex F. Herrera, MD

- 10:35 a.m.** Advanced Stage Large B-Cell Lymphoma
- R-CHOP – Jonathan W. Friedberg, MD, MMSc
  - Pola-R-CHOP – Sonali M. Smith, MD
  - Dose-Adjusted EPOCH-R – Mark Roschewski, MD

- 11:05 a.m.** Advanced Stage Mantle Cell Lymphoma
- Bruton's Tyrosine Kinase inhibitors + Chemo-Based – Michael Wang, MD
  - Alternating Regimen – Martin Dreyling, MD
  - BK/R-CHOP + Transplant – Kami J. Maddocks, MD

## Lymphoplasmacytic Lymphoma and Plasma Cell Dyscrasias

MODERATOR: Sarah L. Creamer, MD

- 11:35 a.m.** When It's Not Just MGUS  
Natalie S. Callander, MD

- 11:55 a.m.** Induction Strategies in Lymphoplasmacytic Lymphoma (LPL)  
R. Gregory Bociek, MD, MSc, FRCP(C)

- 12:15 p.m.** B-Cell Maturation Antigen (BCMA) Directed Therapies in Multiple Myeloma  
Krina K. Patel, MD, MSc

- 12:35 p.m.** Non-BCMA Directed Cellular Therapies in Plasma Cell Dyscrasias  
Yi Lin, MD, PhD

- 12:55 p.m.** Adjourn

## Bierman's Brain Trivia—ERAS Edition

(ERAS ATTIRE REQUIRED)

MODERATOR: Matthew A. Lunning DO, FACP

- 3:00 p.m.** Pineapple Cup Semifinals #1

### Team 1: FEARLESS

- James O. Armitage, MD
- Bruce D. Cheson, MD, FACP, FAAAS, FASCO
- Elaine S. Jaffe, MD

### Team 2: SPEAK NOW

- Steven M. Horwitz, MD
- Kerry J. Savage, MD, MSc, FRCP(C)
- Jason R. Westin, MD, MS, FACP

## Pineapple Cup Semifinals #2

### Team 1: FOLKLORE

- Ranjana H. Advani, MD
- Jonathan W. Friedberg, MD, MMSc
- Andrew D. Zelenetz, MD, PhD

### Team 2: REPUTATION

- Alex F. Herrera, MD
- Caron A. Jacobson, MD, MMSc
- Loretta J. Nastoupil, MD

## Ask the Experts

- 4:00 p.m.** Indolent Non-Hodgkin Lymphoma (iNHL)  
MODERATOR: R. Gregory Bociek, MD, MSc, FRCP(C)  
Jonathan W. Friedberg, MD, MMSc  
Caron A. Jacobson, MD, MMSc  
Loretta J. Nastoupil, MD

- 5:00 p.m.** Adjourn

- 7:00 p.m.** Welcome Reception

# Wednesday, July 17

- 7:00 a.m.** Continental Breakfast

## Just in "Case" You Asked Why I Did That

MODERATOR: Philip J. Bierman, MD

- 7:00 a.m.** Early Relapsing Follicular Lymphoma
- Auto Transplant – Craig S. Sauter, MD
  - Bispecific Antibody – Gilles Salles, MD, PhD
  - CAR-T – Loretta J. Nastoupil, MD

- 7:45 a.m.** Early Relapsing Large B-Cell Lymphoma
- Chemotherapy + Auto Transplant – R. Gregory Bociek, MD, MSc, FRCP(C)
  - CAR-T – Jason R. Westin, MD, MS, FACP
  - Neither – Nancy L. Bartlett, MD

- 8:30 a.m.** BTK Refractory Mantle Cell Lymphoma
- Non-CAR-T – Tycel Jovelle Phillips, MD
  - CAR-T – Mark S. Hoffman, MD

- 9:00 a.m.** Relapsed Primary CNS Lymphoma
- BTK-Based – Christopher D'Angelo, MD
  - Chemo-Based – Kerry J. Savage, MD, MSc, FRCP(C)

# Conference Agenda

## The Masked Lymphoma Doctor

MODERATOR: Matthew A. Lunning, DO, FACP

### 9:30 a.m. A Case of Peripheral T-Cell Lymphoma

Sonali M. Smith, MD  
Julie M. Vose, MD, MBA  
Kerry J. Savage, MD, MSc, FRCPC

### 10:00 a.m. A Case of Mantle Cell Lymphoma

Brad S. Kahl, MD  
John P. Leonard, MD  
Mark S. Hoffman, MD

### 10:30 a.m. Refreshment Break

MODERATORS: Matthew A. Lunning, DO, FACP and Julie M. Vose, MD, MBA

### 10:50 a.m. James O. Armitage Lymphoma Clinical Investigator Award

Caron A. Jacobson, MD, MMSc

### 11:20 a.m. Oliver Press Memorial Lecture

Elaine S. Jaffe, MD

### 11:50 a.m. Bierman's Brain Trivia Pineapple Cup Finals

### 12:30 p.m. Adjourn

## Ask the Experts

### 3:00 p.m. DLBCL

MODERATOR: James O. Armitage, MD  
Nancy L. Bartlett, MD  
Jason R. Westin, MD, MS, FACP  
Andrew D. Zelenetz, MD, PhD

### 4:00 p.m. cHL

MODERATOR: Julie M. Vose, MD, MBA  
Ranjana H. Advani, MD  
Stephen M. Ansell, MD, PhD  
Craig H. Moskowitz, MD

### 5:00 p.m. Adjourn

## Thursday, July 18

### 7:00 a.m. Continental Breakfast

## Royal Lymphoma Rumble

MODERATOR: Nitin Jain, MD

### 7:30 a.m. BV-CHP in CD30 Expressing Non-Anaplastic Large Cell Lymphoma - T-Cell Lymphoma

For: Kerry J. Savage, MD, MSc, FRCPC  
Against: Swaminathan P. Iyer, MD

### 8:00 a.m. Autologous Transplantation for Mantle Cell Lymphoma

For: Andrew D. Zelenetz, MD, PhD  
Against: Martin Dreyling, MD

### 8:30 a.m. BTK Monotherapy for First Line Chronic Lymphocytic Leukemia/Small Lymphocytic Lymphoma

For: Danielle M. Brander, MD  
Against: Matthew S. Davids, MD, MMSc

### 9:00 a.m. Optimal CAR-T Construct in 2026

Autologous: Jeremy S. Abramson, MD, MMSc  
Allogeneic: Frederick L. Locke, MD

### 9:30 a.m. Refreshment Break

## Who Knows

MODERATOR: Vijaya Raj Bhatt, MBBS, MS

### 9:50 a.m. Is There a Right Management of Bispecific Toxicities?

Community Perspective: Tara M. Graff, DO, MS  
Academic Perspective: Loretta J. Nastoupil, MD

### 10:20 a.m. Is There a Right Management of BTK and BCL-2 Refractory CLL/SLL?

Susan M. O'Brien, MD

### 10:40 a.m. Is There a Right Management of Extranodal Marginal Zone Lymphoma?

Emanuele Zucca, MD

### 11:00 a.m. Is There a Right Management of CPI & BV Refractory cHL?

John Kuruvilla, MD, FRCP

### 11:20 a.m. Is There a Right Management of Primary CNS Lymphoma

Neurologist Perspective: Christian Grommes, MD  
Oncologist Perspective: Christopher D'Angelo, MD

### 12:00 p.m. Adjourn

## Ask the Experts

### 3:00 p.m. PTCL

MODERATOR: Matthew A. Lunning, DO, FACP  
Charles A. Enke, MD, FASTRO, FACR  
Steven M. Horwitz, MD  
Swaminathan P. Iyer, MD

### 4:00 p.m. Waldenström Macroglobulinemia/Multiple Myeloma

Moderator: Christopher D'Angelo, MD  
R. Gregory Bociek, MD, MSc, FRCPC(C)  
Yi Lin, MD, PhD  
Krina K. Patel, MD, MSc

### 5:00 p.m. Adjourn

### 7:00 p.m. Conference Dinner

## Friday, July 19

7:00 a.m. Continental Breakfast

### Management of Orphan Diseases: When and How

MODERATOR: Russell J. McCulloh, MD

7:30 a.m. When and How To Treat Gamma-Delta Hepatosplenic T-Cell Lymphoma  
Steven M. Horwitz, MD

7:50 a.m. When and How To Treat with Total Skin Electron Beam Therapy (TSEBT) in Mycosis Fungoides  
Charles A. Enke, MD, FASTRO, FACR

8:10 a.m. When and How To Treat Autoimmune Complications of CLL/SLL  
Danielle M. Brander, MD

8:30 a.m. When and How To Treat Richter's Disease  
Matthew S. Davids, MD, MMSc

8:50 a.m. When and How To Treat Burkitt Lymphoma  
Mark Roschewski, MD

9:10 a.m. When and How To Treat Checkpoint-Related Adverse Events  
Alex F. Herrera, MD

9:30 a.m. Break

### The Class of the Future is Here

MODERATOR: Matthew A. Lunning, DO, FACP

9:50 a.m. Future Therapies: Cellular Therapies  
Nirav N. Shah, MD

10:20 a.m. Future Therapies: Degradors & Celmods  
Mark S. Hoffman, MD

10:50 a.m. Future Therapies: Bispecifics or X-Specific Antibodies  
Michael Dickinson, MD

11:20 a.m. Antibody Drug Conjugates  
Christopher D'Angelo, MD

11:50 a.m. Aloha/Conch Ceremony  
Matthew A. Lunning, DO, FACP

12:00 p.m. Adjourn

## Continuing Education Credits



JOINTLY ACCREDITED PROVIDER™  
INTERPROFESSIONAL CONTINUING EDUCATION

In support of improving patient care, University of Nebraska Medical Center is jointly accredited by the Accreditation Council for Continuing Medical Education (ACCME), the Accreditation Council for Pharmacy Education (ACPE), and the

American Nurses Credentialing Center (ANCC), to provide continuing education for the healthcare team.

### PHYSICIANS

The University of Nebraska Medical Center designates this live activity for a maximum of 28.0 *AMA PRA Category 1 Credits™*. Physicians should claim only the credit commensurate with the extent of their participation in the activity.

### NURSES

The University of Nebraska Medical Center designates this activity for up to 28.0 ANCC contact hours. Nurses should only claim credit for the actual time spent in the activity.

### PHARMACISTS



The University of Nebraska Medical Center designates this activity for 28.0 ACPE contact hours. Pharmacists should claim only the credit commensurate with the extent of their participation in the activity.

## Maintenance of Certification (MOC)

Successful completion of this CME activity, which includes participation in the evaluation component, enables the participant to earn up to:

28.0 Medical Knowledge MOC points in the American Board of Internal Medicine's (ABIM) Maintenance of Certification (MOC) program.

28.0 MOC points in the American Board of Pathology's (ABPATH) Maintenance of Certification (MOC) program.

It is the CME Provider's responsibility to submit participant completion information to ACCME for the purpose of granting MOC credit.





# Conference Faculty

## **Jeremy S. Abramson, MD, MMSc**

Director, Jon and Jo Ann Hagler Center for Lymphoma, Massachusetts General Hospital; Associate Professor of Medicine, Harvard Medical School, Boston, MA

## **Ranjana H. Advani, MD**

Saul A. Rosenberg Professor of Lymphoma, Department of Medicine/Oncology, Stanford Cancer Institute, Stanford University Medical Center, Stanford, CA

## **Stephen M. Ansell, MD, PhD**

Dorothy W. and Grant L. Sundquist Professor in Hematologic Malignancies Research; Chair, Division of Hematology, Mayo Clinic, Rochester, MN

## **James O. Armitage, MD★**

Joe Shapiro Professor of Medicine, Division of Oncology and Hematology, Department of Internal Medicine, University of Nebraska Medical Center, Omaha, NE

## **Sally F. Barrington, MBBS, MSc, FRCP, FRCR, MD**

Professor of PET Imaging and NIHR Research Professor, School of Biomedical Engineering and Imaging Sciences, King's College London, St. Thomas' Hospital, London, United Kingdom

## **Nancy L. Bartlett, MD**

Professor of Medicine, Koman Chair in Medical Oncology, Washington University School of Medicine, Siteman Cancer Center, St. Louis, MO

## **Vijaya Raj Bhatt, MBBS, MS**

Associate Professor, Division of Oncology and Hematology; Medical Director, Leukemia Program Section Leader, Malignant Hematology, University of Nebraska Medical Center, Omaha, NE

## **Philip J. Bierman, MD**

Professor Emeritus, Division of Oncology and Hematology, Department of Internal Medicine, University of Nebraska Medical Center, Omaha, NE

## **Ruemu E. Birhiray, MD**

Clinical Professor of Medicine, Marian University, College of Osteopathic Medicine; Oncology Specialist, Hematology Oncology of Indiana, A Division of American Oncology Network, PA.; President/CEO, Indy Hematology Education, Inc., Indianapolis, IN

## **R. Gregory Bociek, MD, MSc, FRCP(C)**

Professor, Division of Oncology and Hematology, Department of Internal Medicine, University of Nebraska Medical Center, Omaha, NE

## **Danielle M. Brander, MD**

Assistant Professor of Medicine; Director, CLL & Lymphoma Research Program, Member of the Duke Cancer Institute, Duke Health Integrated Practice, Durham, NC

## **Natalie S. Callander, MD**

Professor of Medicine; Director, Myeloma Clinical Program, University of Wisconsin Carbone Cancer Center, Madison, WI

## **Bruce D. Cheson, MD, FACP, FAAAS, FASCO**

Scientific Advisor to the Lymphoma Research Foundation; Center for Cancer and Blood Disorders, Bethesda, MD

## **Christine Cox, RN**

Dana-Farber/Brigham & Women's Cancer Institute, Boston, MA

## **Sarah L. Creamer, MD**

Hematologist/Medical Oncologist, Nebraska Cancer Specialists, Grand Island, NE

## **Christopher D'Angelo, MD**

Assistant Professor, Division of Oncology and Hematology, Department of Internal Medicine, University of Nebraska Medical Center, Omaha, NE

## **Matthew S. Davids, MD, MMSc**

Associate Professor of Medicine, Harvard Medical School; Co-Leader, Lymphoma and Myeloma Program, Dana-Farber/Harvard Cancer Center; Clinical Research Director, Division of Lymphoma, Dana-Farber Cancer Institute, Boston, MA

## **Michael Dickinson, MD**

Associate Professor and Lead of the Aggressive Lymphoma Disease Group, Peter MacCallum Cancer Centre and Royal Melbourne Hospital, Melbourne, Victoria, Australia

## **Martin Dreyling, MD**

Professor of Medicine, LMU University Hospital, Munich, Germany

## **Charles A. Enke, MD, FASTRO, FACR**

Chairman and Professor, Department of Radiation Oncology, University of Nebraska Medical Center, Omaha, NE

## **Jonathan W. Friedberg, MD, MMSc**

Director, James P. Wilmot Cancer Institute; Samuel Durand Professor of Medicine, University of Rochester Medical Center, Rochester, NY

## **Tara M. Graff, DO, MS**

Physician Champion and Lead, Mission Cancer Trials Program, Mission Cancer and Blood, Des Moines, IA

## **Michael R. Green, PhD**

Associate Professor; Director, Translational and Laboratory Research, Department of Lymphoma/Myeloma, Division of Cancer Medicine, The University of Texas MD Anderson Cancer Center, Houston, TX

## **Christian Grommes, MD**

Associate Member, Department of Neurology, Memorial Sloan Kettering Cancer Center; Associate Professor of Neurology, Weill Cornell Medical College, New York, NY

## **Alex F. Herrera, MD**

Associate Professor; Chief, Division of Lymphoma, Department of Hematology and Hematopoietic Cell Transplantation; Associate Medical Director of the Briskin Center for Clinical Research & City of Hope Duarte Clinical Trials Office, City of Hope Medical Center, Duarte, CA

## **Mark S. Hoffmann, MD**

Associate Professor, Division of Hematologic Malignancies and Cellular Therapeutics, University of Kansas Cancer Center, Kansas City, KS

## **Steven M. Horwitz, MD**

Member and Attending Physician, Lymphoma Service, Department of Medicine, Memorial Sloan Kettering Cancer Center, New York, NY

## **Swaminathan P. Iyer, MD**

Professor, Department of Lymphoma/Myeloma, Division of Cancer Medicine, The University of Texas MD Anderson Cancer Center, Houston, TX

## **Caron A. Jacobson, MD, MMSc**

Medical Director, Immune Effector Cell Therapy Program; Senior Physician; Associate Professor of Medicine, Harvard Medical School, Dana-Farber Cancer Institute, Boston, MA

## **Elaine S. Jaffe, MD**

NIH Distinguished Investigator, Head, Hematopathology Section, Laboratory of Pathology, Center for Cancer Research, National Cancer Institute, Bethesda, MD

## **Nitin Jain, MD**

Associate Professor, Department of Leukemia, The University of Texas MD Anderson Cancer Center, Houston, TX

## **Brad S. Kahl, MD**

Professor of Medicine; Director, Lymphoma Program, Siteman Cancer Center, Washington University School of Medicine, St. Louis, MO

## **David S. Kroll, MD**

Associate Vice Chair for Quality and Safety, Department of Psychiatry, Brigham and Women's Hospital; Director of Ambulatory Psychiatry, Mass General Brigham, Boston, MA

## **John Kuruvilla, MD, FRCP**

Clinician Investigator, Princess Margaret Cancer Centre Cancer Clinical Research Unit (CCRU), Princess Margaret Cancer Centre, Toronto, Ontario, Canada

## **Ann S. LaCasce, MD, MMSc**

Director, Dana-Farber/Mass General Brigham Fellowship in Hematology/Oncology; Fellowship Program in Hematology/Oncology Chair; Associate Professor of Medicine, Harvard Medical School, Dana-Farber Cancer Institute, Boston, MA



.....

**John P. Leonard, MD**

Senior Associate Dean for Innovation and Initiatives; Chair (Interim), Weill Department of Medicine; Richard T. Silver Distinguished Professor of Hematology and Medical Oncology, Weill Cornell Medicine and New York-Presbyterian, New York, NY

**Yi Lin, MD, PhD**

Professor of Medicine; Assistant Professor of Oncology, Mayo Clinic College of Medicine, Rochester, MN

**Frederick L. Locke, MD**

Moffitt Distinguished Scholar and Hawkins Family Endowed Chair; Department Chair and Senior Member, Blood and Marrow Transplant and Cellular Immunotherapy; Leader, Cellular Immunotherapy Program, Moffitt Medical Group; Co-Leader, Immuno-Oncology Program, Moffitt Research Institute; Professor, Oncological Sciences, University of South Florida, Tampa, FL

**Matthew A. Lunning, DO, FACP★**

Associate Professor, Division of Oncology and Hematology, Department of Internal Medicine; Assistant Vice Chancellor for Clinical Research, University of Nebraska Medical Center, Omaha, NE

**Kami J. Maddocks, MD**

Professor, Division of Hematology; Director, Lymphoma Program; Medical Director of Infusion Services, The Ohio State University James Comprehensive Cancer Center, Columbus, OH

**Jared E. Matya, PharmD, BCOP**

Clinical Pharmacist Practitioner, Blood and Marrow Transplant/Cellular Therapy, Nebraska Medicine, Omaha, NE

**Russell J. McCulloh, MD**

Vice President for Research, Nebraska Medicine; Associate Vice Chancellor for Clinical Research; Professor, Division of Hospital Medicine; Professor, Department of Pediatrics, Division of Infectious Diseases; University of Nebraska Medical Center, Omaha, NE

**Angela Mortensen, LICSW**

Social Worker, Nebraska Medicine, Omaha, NE

**Craig H. Moskowitz, MD**

Physician-in-Chief, Cancer Service Line, Sylvester Comprehensive Cancer Center; Professor of Medicine, Miller School of Medicine, University of Miami Health System, Miami, FL

**Caitlin A Murphy DNP, APRN, FNP-BC, AOCNP**

Clinical Nurse Practitioner, Dana-Farber Cancer Institute, Boston, MA

**Loretta J. Nastoupil, MD**

Lead, Early Phase Drug Development, Division of Cancer Medicine, Department of Lymphoma and Myeloma, The University of Texas MD Anderson Cancer Center, Houston, TX

**Grzegorz S. Nowakowski, MD**

Associate Professor, Department of Hematology and Oncology, Mayo Clinic, Rochester, MN

**Susan M. O'Brien, MD**

Professor of Medicine; Division of Hematology/Oncology, University of California/Irvine, Irvine, CA

**Krina K. Patel, MD, MSc**

Associate Professor, Department of Lymphoma/Myeloma, Division of Cancer Medicine, The University of Texas MD Anderson Cancer Center, Houston, TX

**Katie Penas, MHA, CNMT, RT(N)**

Clinical Research Manager, Clinical Research Center, Nebraska Medicine, Omaha, NE

**Tycel Jovelle Phillips, MD**

Associate Professor, Division of Lymphoma, Department of Hematology & Hematopoietic Cell Transplantation, City of Hope, Duarte, CA

**Mark Roschewski, MD**

Senior Clinician and the Clinical Director of the Lymphoid Malignancies Branch (LYMB) of the Center for Cancer Research, National Cancer Institute Center for Cancer Research, National Institutes of Health, Bethesda, MD

**Davide Rossi, MD, PhD**

Group Leader, Laboratory of Experimental Hematology, Institute of Oncology Research, Bellinzona, Switzerland; Deputy Head, Clinic of Hematology, Oncology Institute of Southern Switzerland, Bellinzona, Switzerland; Co-chair, Lymphoma Research Program, Oncology Institute of Southern Switzerland, Bellinzona, Switzerland

Associate Professor, Faculty of Biomedical Sciences, Università della Svizzera italiana, Lugano, Switzerland

**Gilles Salles, MD, PhD**

Service Chief, Lymphoma Service, Steven A. Greenberg Chair, Memorial Sloan Kettering Cancer Center, New York, NY

**Craig S. Sauter, MD**

Director, Blood and Marrow Transplant Program, Cleveland Clinic, Cleveland, OH

**Kerry J. Savage, MD, MSc, FRCPC**

Professor of Medicine, University of British Columbia; Medical Oncologist, BC Cancer, Vancouver, British Columbia, Canada

**Ashley L. Schmitt, PA-C**

Nebraska Medicine, Omaha, NE

**Nirav N. Shah, MD**

Associate Professor of Medicine, Lymphoma/BMT Program, Medical College of Wisconsin, Milwaukee, WI

**Kyle Skiermont, PharmD**

Assistant Dean for Clinical Affairs, College of Pharmacy, University of Nebraska Medical Center; Vice President of Pharmacy and Oncology, Nebraska Medicine, Omaha, NE

**Sonali M. Smith, MD**

Elwood V. Jensen Professor of Medicine; Chief, Section of Hematology/Oncology; Co-Director, Lymphoma Program, The University of Chicago, Chicago, IL

**Judith Trotman, MBChB, FRACP, FRCPA**

Clinical Professor, University of Sydney; Head of Department, Haematology, Concord Repatriation General Hospital, Concord, Australia

**Julie M. Vose, MD, MBA★**

Neumann M. and Mildred E. Harris Professor and Chief, Division of Oncology and Hematology, Department of Internal Medicine, University of Nebraska Medical Center, Omaha, NE

**Michael Wang, MD**

Puddin Clarke Endowed Professor, Director, Mantle Cell Lymphoma Program of Excellence; Co-Director, B-Cell Lymphoma Moon Shot Program; Division of Cancer Medicine, Department of Lymphoma and Myeloma, The University of Texas MD Anderson Cancer Center, Houston, TX

**Jason R. Westin, MD, MS, FACP**

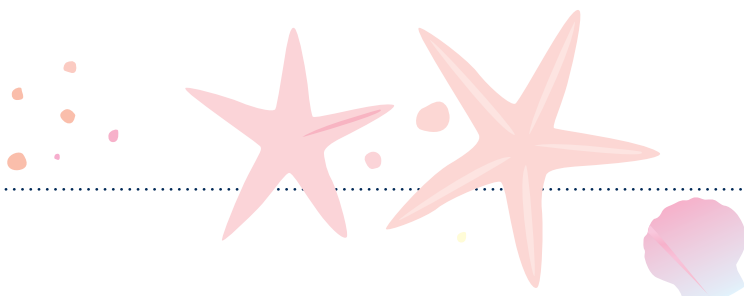
Professor; Section Chief, Aggressive Lymphoma; Director, Lymphoma Clinical Research Program, Department of Lymphoma and Myeloma, The University of Texas MD Anderson Cancer Center, Houston, TX

**Andrew D. Zelenetz, MD, PhD**

Medical Director, Quality Informatics; Attending Physician, Lymphoma Service, Department of Medicine, Memorial Sloan Kettering Cancer Center; Professor of Medicine, Weill Cornell Medicine, New York, NY

**Emanuele Zucca, MD**

Consultant and Head of the Lymphoma Unit, Division of Medical Oncology, The Oncology Institute of Southern Switzerland (IOSI), Bellinzona, Switzerland



# Hotel and Travel

## Hotel Accommodations



### Hyatt Regency Maui Resort and Spa

200 Nohea Kai Dr, Lahaina, HI 96761

A block of rooms has been reserved at the Hyatt Regency Maui Resort and Spa, from Friday, July 12 through Sunday, July 21, 2024.

#### ROOM RATES (SINGLE/DOUBLE OCCUPANCY)

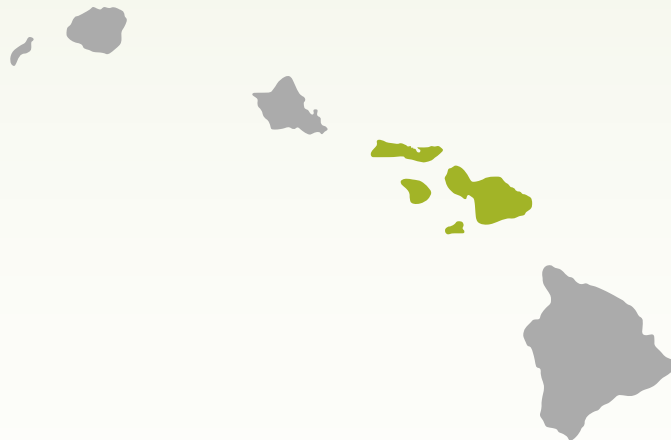
- Resort/Golf Mountain View — \$459
- Partial Ocean View — \$479
- Deluxe Ocean View — \$509

The maximum occupancy per room is 4.

There is no charge for children 18 years and under sharing the same room as the parents and using existing bedding (1 king or 2 queen beds).

#### Other Charges

- Additional person over 18 years old – \$80 per night is applied to individual folio
- Resort fee – \$20 per room per day plus Hawaii state tax. This daily resort fee is automatically posted to the individual folio.
- Portorage – \$14 per person (includes children of all ages) plus Hawaii state tax. This rate is based on two bags per person. This charge is automatically posted to the individual folio.
- Housekeeping gratuities are up to the individual's discretion, \$6 per room, per day, is recommended.



#### RESERVATION METHOD

- To ensure that only registered participants are able to use the conference-contracted hotel rates, **the link to make your hotel reservation will be included in the email confirming your conference registration.** If you do not receive this email within 48 hours of your registration, please contact the UNMC CCE registration office at 402-559-5929.
- A two nights deposit for all reservations will be taken at the time of booking.
- **The block rate is available on a first-come, first-served basis until April 5, 2024.** After this date, reservations will be accepted on a space and rate availability basis.

#### Hotel Cancellation Policy

- **30 to 7 days prior to arrival:** All cancellations received within this time period will be assessed a two nights room rental, plus applicable taxes.
- **7 days up to arrival date:** All cancellations received within this time period as well as no-shows will be assessed the cost of the full length of the stay, plus applicable taxes.

---

## *Airport/Travel Information*

The two closest airports to the Hyatt Regency Maui Resort and Spa are Kahului Airport/OGG (approximately 27 miles) and Kapalua West Maui Airport/JHM (approximately 4 miles).

## *Conference Attire*

Casual dress is encouraged for the entire conference. Layered clothing is recommended as the temperature in meeting rooms can fluctuate. A light jacket or sweater for outdoor evening activities is suggested.

## *Maui*

Maui is the second largest of the Hawaiian Islands. It encompasses a striking spectrum of landscapes and experiences with a beautiful blend of beaches, volcanoes, palm trees, and tropical agriculture. Also known as “The Valley Isle,” Maui sits as a large valley between two dormant

volcanoes — Haleakala in the east and Mauna Kahalawai in the west. Maui is known for its beaches, with over 120 miles of shoreline and 80 beaches — more than any other island in Hawaii.







University of Nebraska Medical Center  
Center for Continuing Education  
986800 Nebraska Medical Center  
Omaha, NE 68198-6800

CID 54121

NON PROFIT  
US POSTAGE  
P A I D  
OMAHA, NE  
PERMIT NO. 454

# 2024 PAN PACIFIC LYMPHOMA CONFERENCE

July 15-19 • Hyatt Regency Maui



Register by  
**April 19**  
to receive the  
discounted rate!

[www.unmc.edu/panpacificlymphoma](http://www.unmc.edu/panpacificlymphoma)