



Microcredentialing Opportunities as a Means of Recognizing Interprofessional Collaborative Practice Competency Achievement

Heather B Congdon, PharmD, BCPS, CDE, FNAP
University of Maryland, Baltimore


Andrea Pfeifle, EdD, PT, FNAP
The Ohio State University

Sara North, PT, DPT, PhD, M.Ed, PNAP
University of Minnesota

Hossein Khalili, BScN, MScN, PhD, FNAP
University of Wisconsin – Madison

Kelly Dowhower Karpa, PhD, RPh, FAPE, FNAP
East Tennessee State University

1



Microcredentials

- Specialty areas
- Competency-based
- Verify, validate specific skills
- Recognition

2

Terminology Varies

- ▀ Microcredentials
 - ▀ Alternative credentials
 - ▀ Digital badging
 - ▀ Trophies
 - ▀ “Pathways”
 - ▀ Other?
-
- ▀ Commonality: mechanism(s) to recognize skills or competencies



3

Microcredentials to Strengthen IPE Competency Attainment

- ▀ Opportunities for sustained IPE practice & improvement
- ▀ Flexible; customizable
- ▀ Boosts learner engagement and motivation
- ▀ Formal recognition of student achievement
- ▀ “Stackable” – follow a trajectory towards higher levels of competency
- ▀ Shared with employers
- ▀ Pathway for workforce development



4

Different Approaches/Frameworks



- ▶ Four IPE tenets (values, roles, communication, teamwork)
- ▶ Learning continuum (introduction, immersion, practice)
- ▶ Leadership &/or Scholarship projects
- ▶ Health Systems
- ▶ Combinations of above

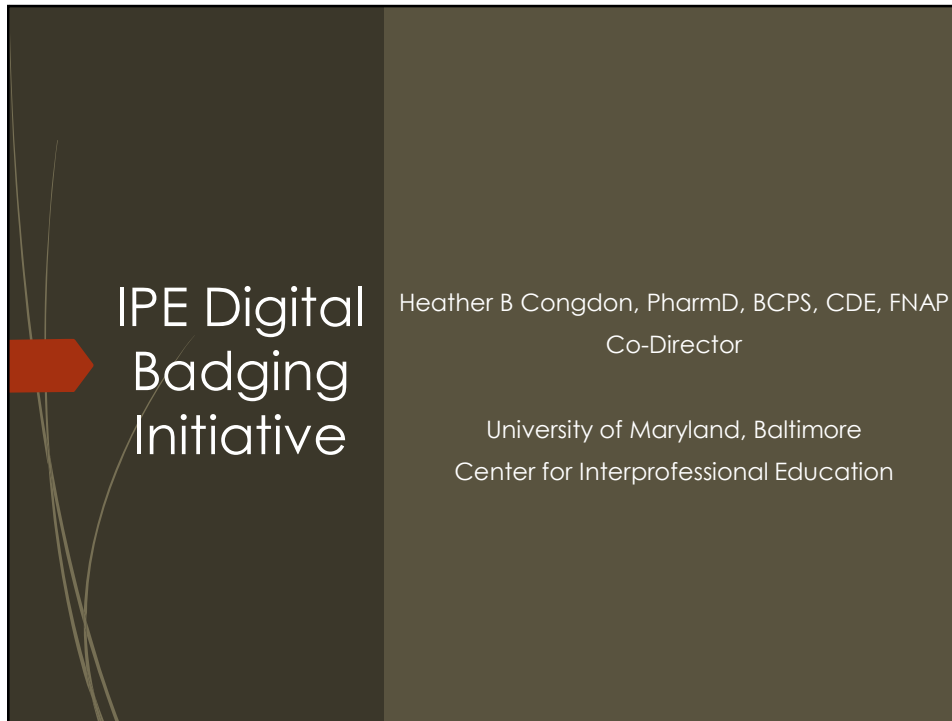
5

Outline of Today's Activities

- ▶ Lightning Round (40 min): Representatives from several universities introduce their microcredentialing frameworks; moderated and open Q&A
- ▶ Breakout Rooms (25 min)
- ▶ Debrief (15 min)



6

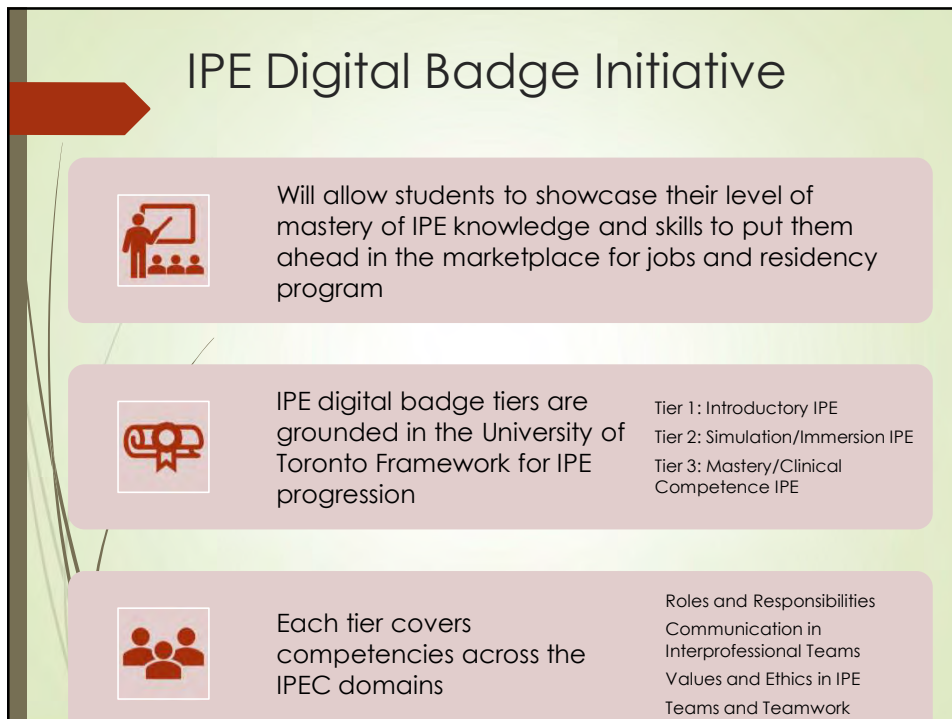


IPE Digital Badging Initiative


Heather B Congdon, PharmD, BCPS, CDE, FNAP
Co-Director


University of Maryland, Baltimore
Center for Interprofessional Education

7




IPE Digital Badge Initiative

 Will allow students to showcase their level of mastery of IPE knowledge and skills to put them ahead in the marketplace for jobs and residency program

 IPE digital badge tiers are grounded in the University of Toronto Framework for IPE progression

Tier 1: Introductory IPE
Tier 2: Simulation/Immersion IPE
Tier 3: Mastery/Clinical Competence IPE

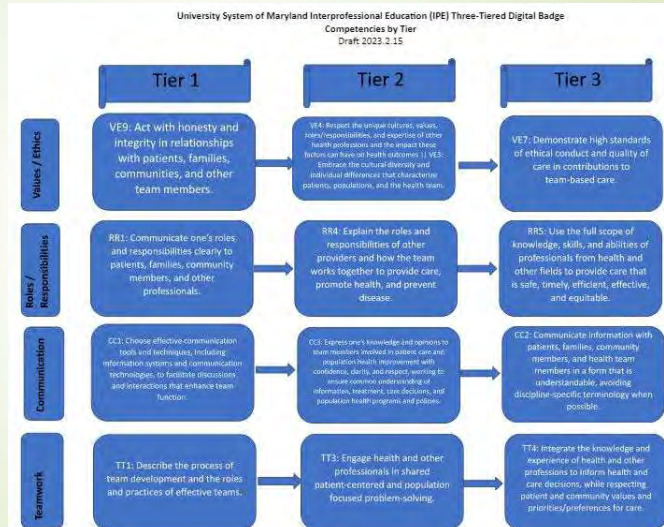
 Each tier covers competencies across the IPEC domains

Roles and Responsibilities
Communication in Interprofessional Teams
Values and Ethics in IPE
Teams and Teamwork

8

IPE Digital Badge Initiative

- The three-tiered IPE digital badging initiative is a collaboration with USM and select other institutions within USM.



9

IPE Registry



Established partnership with Texas Tech University to develop IPE activity registry for UMB and other select institutions in USM

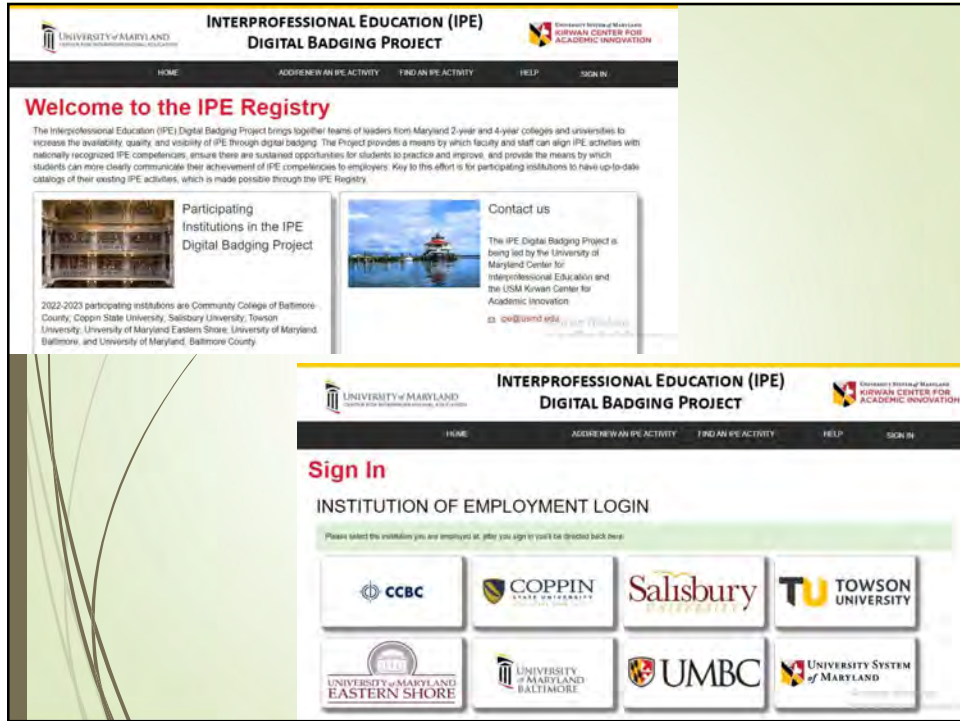


Will allow students from UMB and other participating USM institutions easy access to a listing and details of all IPE activities on campus

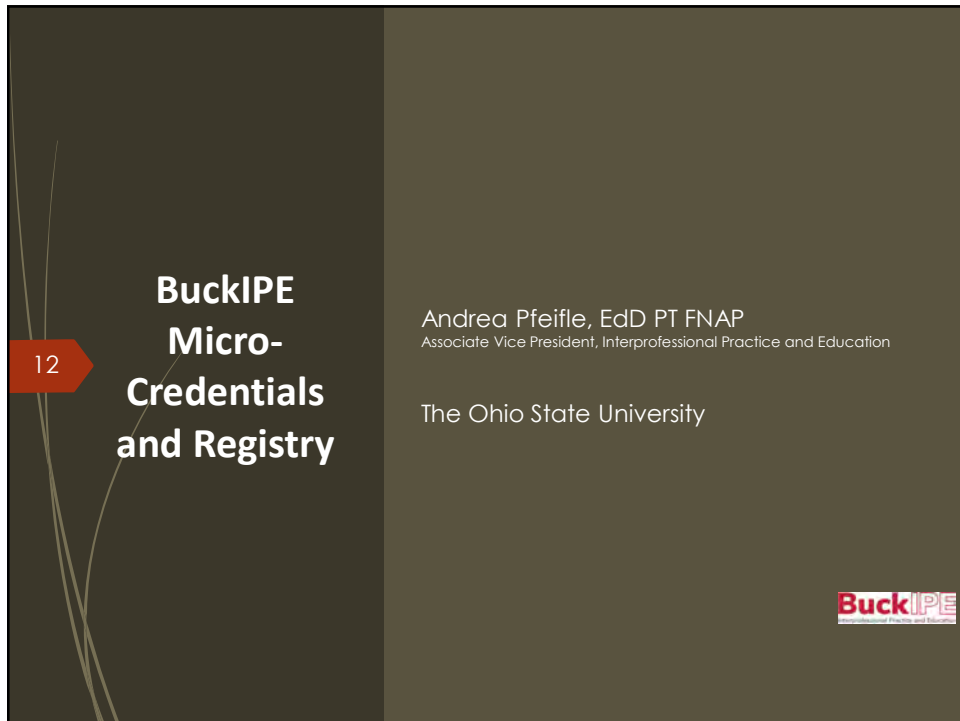


Students can filter registered activities by applicable student disciplines, IPEC competency domain covered, level of IPE activity (introductory, simulation, clinical)

10



11



12

Background



- Developed in response to Student Advisory Board request to have one-stop-shop access to learn about interprofessional opportunities and receive transcript annotation / credit for IP learning.
- Ohio State certificate and micro-credentialing guidelines approved Spr 2022.
- No additional costs to the learners to enroll and complete / acquire micro-credentials.
- Aligns with Ohio State Academic Plan and Wexner / University workforce development

BuckIPE
Interprofessional Practice and Education

13

14 BuckIPE Micro-Credentials

- Competency-based mechanism to demonstrate and communicate interprofessional collaboration and teamwork training.
- Six micro-credentials allow the learner to demonstrate competence in interprofessional collaboration and teamwork. With the ability to grow and expand: SDoH, Quintuple Aim etc.
- Using the OSU IPE registry, users can register to participate in the micro-credentialing process, identify, preview, and plan for participation in curated learning appropriate to each micro-credential.

BuckIPE
Interprofessional Practice and Education

14

15

BuckIPE Pathway to Excellence: Available Micro-Credentials

- Values and Ethics for Interprofessional Collaborative Practice
- Roles and Responsibilities
- Interprofessional Communication
- Teams and Teamwork
- Under development:
 - Collaborative Leadership
 - Evidence-Based Practice
 - Social Determinants of Health

BuckIPE
Interprofessional Practice and Education

15

16

BuckIPE Micro-Credentials

```

graph TD
  A[Enroll] --> B[Log]
  B --> C[Reflect]
  C --> D[Submit]
  
```

Enroll	Enroll in the micro-credential program online
Log	Log their IP learning experience
Reflect	Reflect on newly acquired knowledge, skills, and next steps
Submit	Submit documentation of competence


BuckIPE
Interprofessional Practice and Education

16

THE OHIO STATE UNIVERSITY


Home Add/Renew an IPE Activity Find an IPE Experience Help Sign In

Welcome to the IPE Registry




BuckIPE Pathway to Excellence

To learn more, visit the [IPE website](#). To register, complete this [Qualtrics survey](#)




Search for available experiences at OSU

Find an IPE experience offered by your institution.



Request an IPE Experience

Want to request an experience? Complete an IPE submission request.

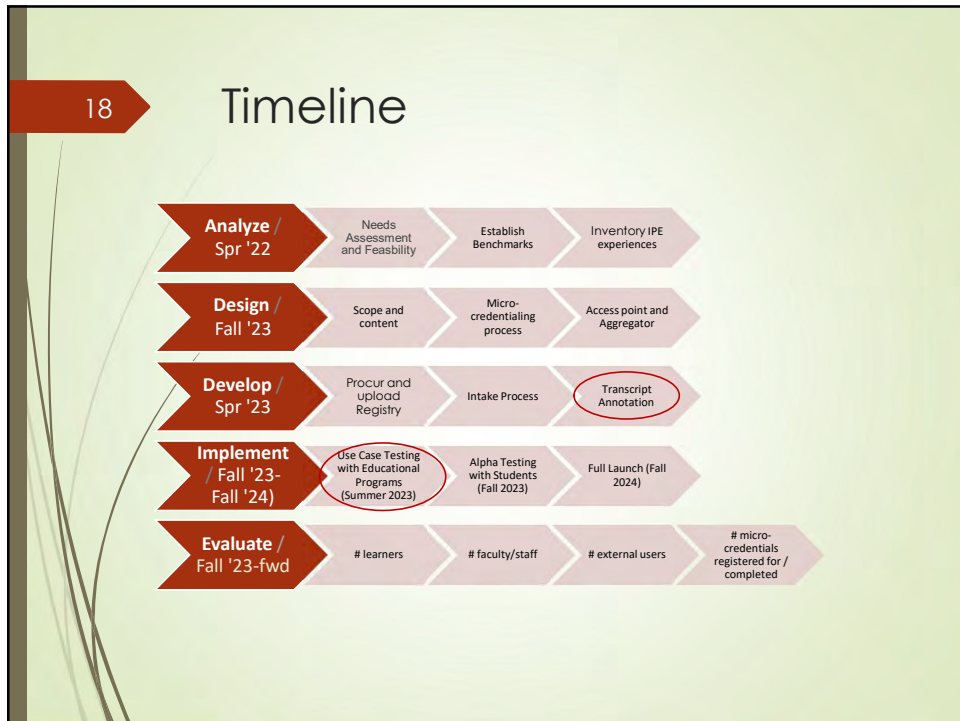


Add an IPE Experience


IPE Team Only: Add or renew an IPE experience.

BuckIPE
International Practice and Education

17



18




IPE Scholars Program

Sara North PT, DPT, PhD, M.Ed., PNAP
CIH Co-Director

University of Minnesota - Center for
Interprofessional Health

19

IPE Scholars Program




IPE Scholars Program

The Interprofessional Education (IPE) Scholars Program offers University of Minnesota health professions students a unique opportunity to enhance their knowledge about interprofessional education, and develop important interprofessional collaboration skills.

Valuable Benefits

- Distinction on UMN transcript
- Faculty mentorship and guidance
- Interprofessional knowledge enhancement
- Interprofessional skill development
- Interprofessional leadership and/or teaching experience

IPE Scholars Program Components



Apply & Get Started!

- **Review the IPE Scholars Program requirements** online at: z.umn.edu/ipescholars.
- **Develop a personal statement** that describes your interest in participating in the program.
- **Submit your application by the stated deadline!** Applications will open September 5, 2023, with a deadline of December 15, 2023 for the 2023-24 academic year.
- **Participate in an IPE Scholars Kick-off Meeting** to get started and begin developing your IPE Scholars Program plan!

20



IPE Knowledge

- **Explore** online resources and read the IPEC Competency reports.
- **Review** historical articles and examine current trends in IPE.
- **Discuss** what you learned from these resources with your 1Health Faculty Advisor.

IPE Skill Development

Engage in a variety of interprofessional courses and activities that will help to further develop and refine your interprofessional communication and collaboration skills.

Examples:

- CLARION Local Case Competition
- Biomedical Ethics Seminar
- Phillips Neighborhood Clinic
- Immunization Tour
- Health Professional Student Leadership Conference

IPE in Action

Apply your interprofessional knowledge and experiences by developing and carrying out a project plan in one of the following categories: Interprofessional Leadership, Interprofessional Teaching, or Interprofessional Scholarship.

21

× Complete your IPE Knowledge Requirements

Complete your IPE Knowledge Part 1 requirement detailed below ahead of the IPE Scholars Program Kick-Off meeting.

Part 1:

- Review the UMN CIH and 1Health curriculum website, explore the tools and resources on the National Center for Interprofessional Practice and Education website, and read the IPEC Competency reports (2011 & 2016).
- Complete your IPE Knowledge Form - Part 1 form in the [1Health Database](#).
- Discuss what you learned with your peers at the kick-off meeting.

Complete your IPE Knowledge Part 2 requirement detailed below after the IPE Scholars Program Kick-Off meeting.

Part 2:

- Review three seminal articles, and begin to understand current trends in IPE via scholarly journals (such as JIC and JIEP).
- Complete your IPE Knowledge Form - Part 2 form in the [1Health Database](#).
- Discuss what you learned with your IPE Scholars Faculty Advisor.

22


Speech Language Pathology - IPE Scholars Program

Sample Student Plan #1



IPE Scholars Program Requirement	Activity(s) used to Satisfy Requirement
Phase 1	Better Together
Phase 2	Interprofessional Simulation Activity
Phase 3	Collaboration in Action Learner-driven Curriculum
IPE Skill Development	Interprofessional Rehabilitation Case Study Series
IPE in Action	Develop "best practices/recommendations" guide for PT and SLP students participating in the Interprofessional Collaborative Examination: Adult Neurological Population

Note: The requirements listed on the left represent the parts of the IPE Scholars Program that are somewhat customizable, depending on your program of enrollment.



CENTER FOR INTERPROFESSIONAL HEALTH
UNIVERSITY OF MINNESOTA
Driven to Discover®

23


Nursing (DNP) - IPE Scholars Program

Sample Student Plan



IPE Scholars Program Requirement	Activity(s) used to Satisfy Requirement
Phase 1	Essentials of Ambulatory Care Workshop
Phase 2	MN LEND (Minnesota Leadership Education in Neurodevelopmental & Related Disabilities)
Phase 3	Interprofessional Integrative Mental Health Focus Area
IPE Skill Development	Interprofessional Collaborative Practice in HIV Care
IPE in Action	Harm Reduction: Informed Consent for Physical Exam

Note: The requirements listed on the left represent the parts of the IPE Scholars Program that are somewhat customizable, depending on your program of enrollment.





CENTER FOR INTERPROFESSIONAL HEALTH
UNIVERSITY OF MINNESOTA
Driven to Discover®

24


Veterinary Medicine - IPE Scholars Program

Sample Student Plan


IPE Scholars Program Requirement	Activity(s) used to Satisfy Requirement
Phase 1	Better Together
Phase 2	Global Health in a Local Context
Phase 3	Topics in Migrant Health
IPE Skill Development	Ecosystem Health: Leadership at the Intersection of Humans, Animals and the Environment
IPE in Action	CLARION Executive Board Member

Note: The requirements listed on the left represent the parts of the IPE Scholars Program that are somewhat customizable, depending on your program of enrollment.



CENTER FOR INTERPROFESSIONAL HEALTH
UNIVERSITY OF MINNESOTA
Driven to Discover™


25



UW Center for Interprofessional Practice and Education
UNIVERSITY OF WISCONSIN-MADISON

UW CIPE Badger and Path of Distinction Programs

Hossein Khalili, BScN, MScN, PhD, FNAP; Director, UW Center for Interprofessional Practice and Education (UW CIPE)



26

UW Center for Interprofessional Practice and Education
UNIVERSITY OF WISCONSIN-MADISON

UW CIPE is a University Center Affiliated By:

- UW Office of the Provost
- UW School of Medicine and Public Health
- UW School of Nursing
- UW School of Pharmacy
- UW School of Veterinary Medicine

Currently, we are working with more than 15 different health/social programs through our offerings and committees.

www.cipe.wisc.edu

27

UW-Madison Two-Tier IPE Program At A Glance

- IPE Competency Modules**
- IPE Path of Distinction & Badger Programs**
- IPE Experiential Expansion Initiative**
- IPE Healthy Aging Initiative**
- IPE Knowledge Exchange Series**
- IPE Systematic Assessment**
- IPE Professional Development**
- IPE Awards and Fellowship**
- IPE-Related Student Orgs**
- IPE Scholarly Work & Annual Report**

28

UW CIPE Badger Program

<https://cipe.wisc.edu/education/#badger>

- UW CIPE Badger Program is a branch of the UW–Madison Badger program and provides digital Badges with a focus on IPE academic training.
- IPE Badges, as formal Micro-Credentials, are awarded to learners who participate in, and successfully complete, designated IPE offerings and activities at UW–Madison and its partners.
- **Since 2019, UW CIPE has issued over 1,820 Badges across its five IPE Badges!**
 - **Current:** IPE Fundamental Badge, AHEC Scholar Badge, IPL Dementia Caregiving Badge, IPE Simulation Badge-ADICS, and IPE Leadership Badge
 - **In progress:** IPE Clinical & Community Experiential Badge, IPE Motivational Interviewing Badge
- There have been recent changes in the platform and pricing.



Completion of IPE Badges count towards the UW IPE Path of Distinction.



29

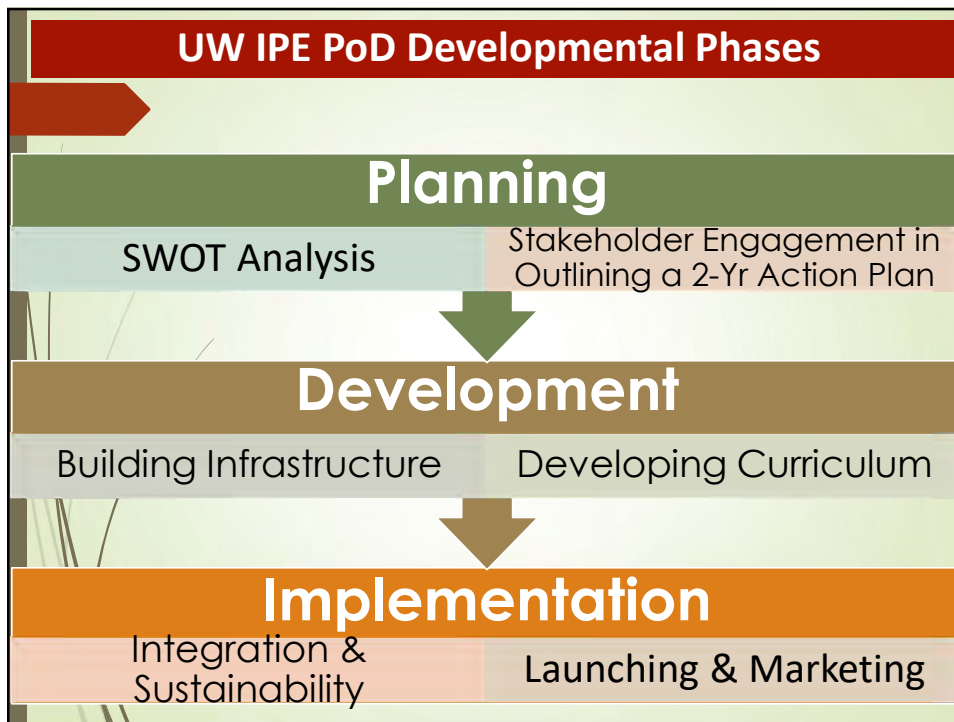
An Exemplar - IPE Healthy Aging Initiative (IPE-HAI)

1. **Advanced Dementia Interprofessional Clinical Simulation Mini-Course (ADICS Simulation Badge)**
2. **Interprofessional Dementia Caregiving Telehealth Community Practicum Badge (IPL Telehealth Badge)**

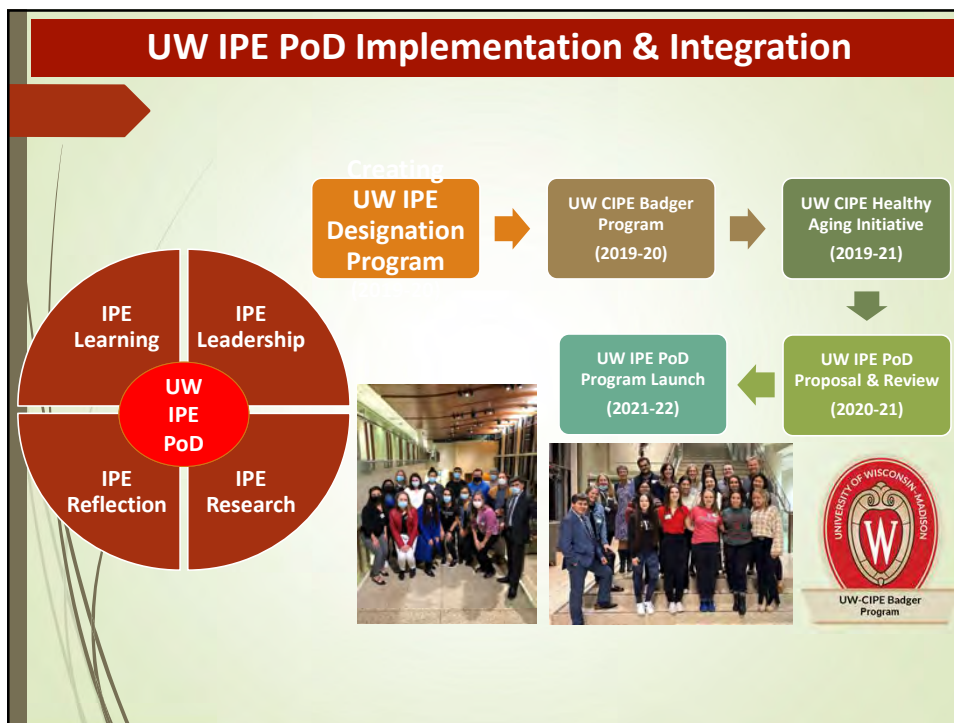
Learn more at: <https://cipe.wisc.edu/education/#IPEhealthyaging>



30



31



32

UW IPE Path of Distinction Program (UW IPE PoD)

<https://cipe.wisc.edu/education/#pod>

2021 Cohort



- **10** students from DPT, MD, MPH, OTD, and PharmD
 - First UW IPE PoD Student, Sarah Uhm, MPH, graduated this spring

2022 Cohort


- **10** students from GC, DPT, MD, MPAS, MPH, and Nursing- TBSN

2023 Cohort

- *Applications for the 2023 cohort close 11/27/23*





33



Questions and Answers

34



Breakout Rooms

- The purpose of the breakout session is for participants to share information related to microcredentialing and/or IPE recognition programs at your institutions. Please feel free to use the prompts listed in the chat to stimulate discussion.
- Discussion prompts
 - Share lessons learned at your institution surrounding microcredentialing and/or IPE recognition programs
 - What do you see as new possibilities at your institution regarding microcredentialing and/or IPE recognition programs?
 - What can you do now to move your institution further in the area of microcredentialing/ IPE recognition programs?
 - What strategies can assure quality and consistency in an IPE microcredentialing/IPE recognition program?
 - What are ideas for assessment and evaluation?

35

Debrief and Wrap-Up



Each breakout room moderator summarizes top 2-3 key points discussed in breakout room



"Chat storm"

What do you plan to do at your home institution to move microcredentialing/IPE recognition programs forward?

36



37